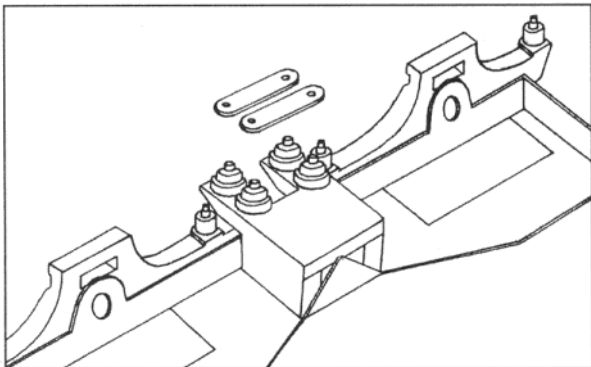


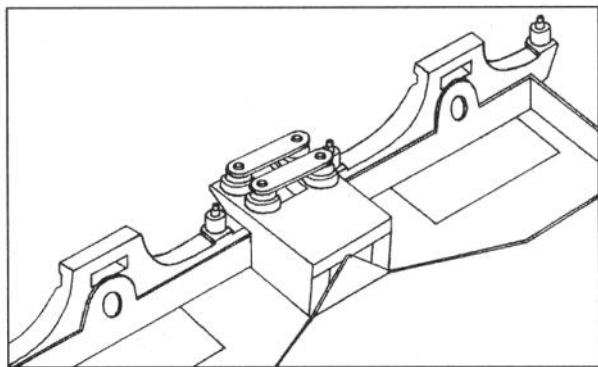
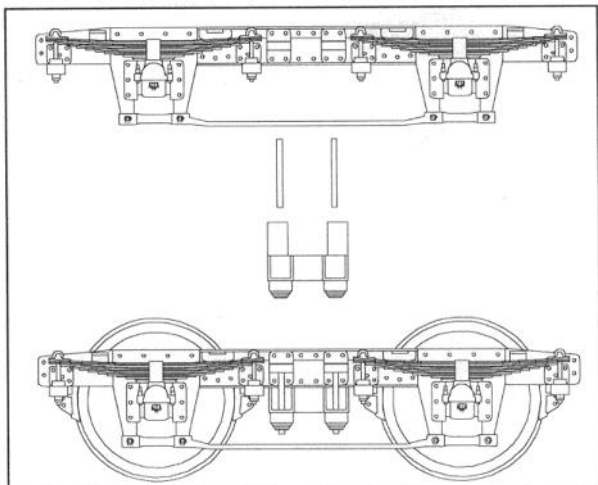
## MJT 2234-2238 Assembly Instructions

GWR Cosmetic Bogies, 7' 0" Plate and 9' 0" Pressed Steel

Drill out the holes in the cast sideframes and bolsters to accept two lengths of 0.45mm wire. Glue the sideframes to an assembled CCU, then locate and glue the bolsters to the underside of the CCU straddling the torsion wire (in the case of the GWR 7'0" bogie this must be threaded through the gap between the bogie sideframe and the tiebar). Identify the correct etched 'straps' from the fret, remove and clean up any tab marks (short is for 7'0" bogie, long is for 9'0" bogie). Glue these to the bottom of the springs as shown in the diagrams. Finally glue the lengths of .45mm wire into the holes prepared earlier and trim to length.

© Dart castings 2007





## MJT 2234-2238 Assembly Instructions

GWR Cosmetic Bogies, 7' 0" Plate and 9' 0" Pressed Steel

Drill out the holes in the cast sideframes and bolsters to accept two lengths of 0.45mm wire. Glue the sideframes to an assembled CCU, then locate and glue the bolsters to the underside of the CCU straddling the torsion wire (in the case of the GWR 7'0" bogie this must be threaded through the gap between the bogie sideframe and the tiebar). Identify the correct etched 'straps' from the fret, remove and clean up any tab marks (short is for 7'0" bogie, long is for 9'0" bogie). Glue these to the bottom of the springs as shown in the diagrams. Finally glue the lengths of .45mm wire into the holes prepared earlier and trim to length.

© Dart castings 2007

